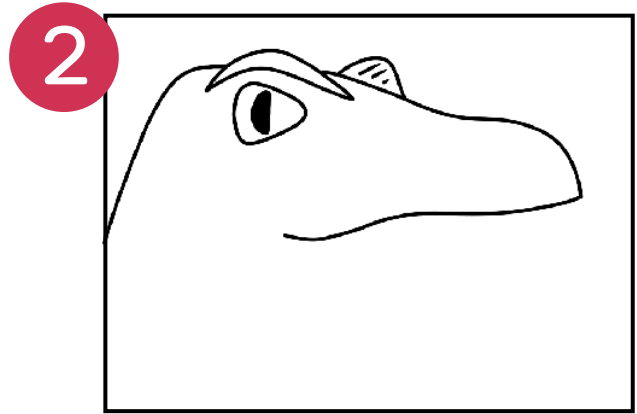
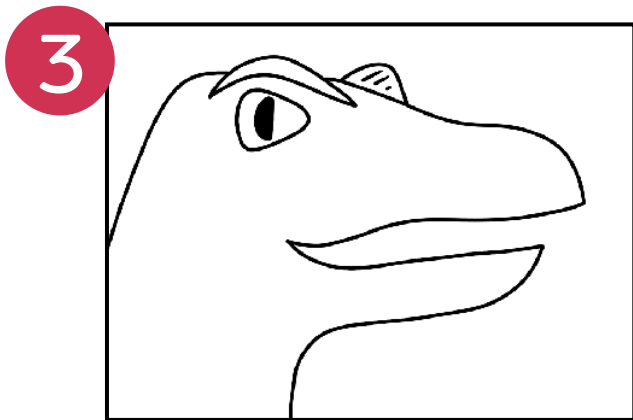


1 Start by drawing an eye near the top left corner of the paper. Draw an upside-down "U" above the eye for the bony ridge.



2 Add a curved line for the back of the head. From the ridge, draw a line that approaches the right side of the page, then cuts in below the eye. Add another ridge on top.



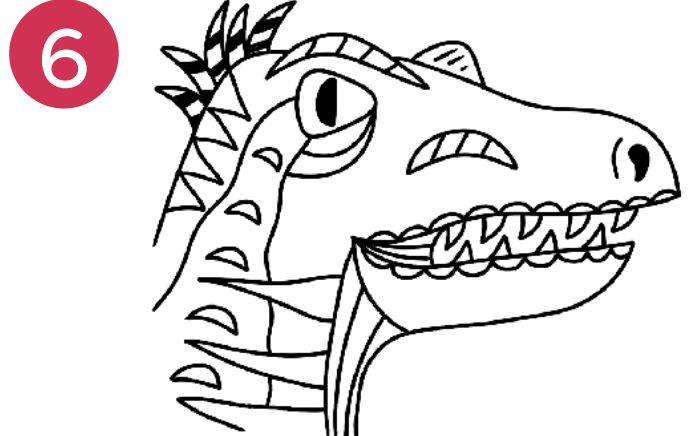
3 Draw the bottom jaw and curve the line down to run off the bottom of the page for the neck.



4 Add a nostril and a backward "C" shape for the nose. Add pointy teeth, then connect the top and bottom jaw with a curved line.



5 Close off the bottom jaw and make a line from the corner of the mouth to the bottom of the page. Add stripes.



6 Add details! You can add stripes, scalloped lines, zig zag lines and shapes. Don't forget a few feathers on the head!

# Raptor DRAWING GUIDE

RAPTORS, FOSSILS  
& FANGS  
BUNDLE